



ACTIVITY: WHIMSICAL FAIRY OR TROLL HOUSE



IDEAL FOR ANY AGE GROUP
AND WORKS GREAT IN THE GARDEN! COMBINE IT WITH
STORY TELLING/CREATING FOR AN ENGAGING
ACTIVITY THAT CAN LAST THE DAY.

Build own Fairy or Troll House using Natural Materials.

Fairy Houses can take many forms and can be created in many different places. Find a quiet place away from roads or busy pathways. The base of a tree or the side of a rock could be just right. Close to the ground is usually best. Sometimes you may find a special place in the low branches of a tree or bush. Look for building areas in woods, beaches, meadows, and especially your own back garden! Use only natural materials to build your house, nothing artificial.

Materials

Sticks, bark, dry grasses, pebbles, shells, feathers, seaweed, pinecones and nuts are just some of the materials you can use.

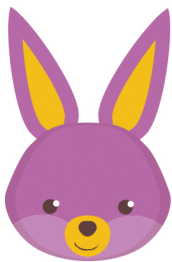
A fairy house built in the woods will look different than one built at the beach! The possibilities are endless.

Rules

Be respectful of plants that are growing. Try not to disturb plants that are still living, such as ferns, mosses and flowers. Fairies are careful not to harm anything that is growing.

Don't forget to share with us.

Send us a photo. #stayconnected #keeplearning



This activity supports:
Design & Technology,
Maths & Science.